



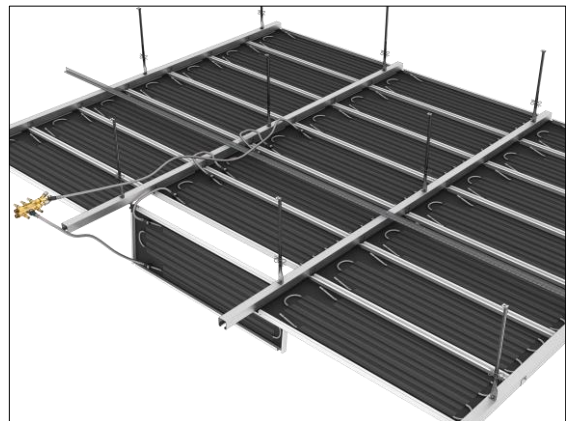
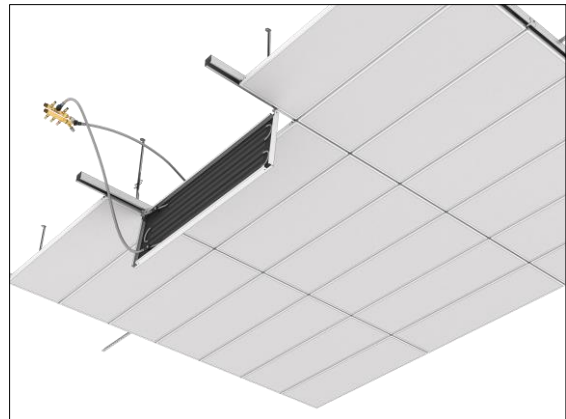
## Plafotherm® E 213

### Heated and Chilled Hook-On Ceiling with accentuated joint

#### Product description

The heated/chilled Hook-On ceiling Plafotherm® E 213 is characterised by a homogeneous ceiling surface with accentuated joints. Your rooms are effectively heated and chilled by means of radiation. Thus, a pleasant room climate is created. The Hook-On ceiling panels can individually and variably be designed: a multitude of panel sizes and shapes is possible. The ceiling panels can be removed or swung down and slid without tools to guarantee a quick access to the ceiling void for maintenance works. A combination of thermally active and passive areas is possible.

- heating/cooling by means of radiation creates a pleasant room climate
- flexibility thanks to the combination of thermally active and passive areas
- homogeneous ceiling surface due to concealed substructure
- individual design thanks to flexible panel shapes and sizes
- ceiling layout with accentuated joints in both directions possible
- easy maintenance option due to ceiling panels that can be individually operated, swung down and slid without tools
- hygienic and easy to clean



#### Project solutions

This product data sheet refers to the standard version of the product mentioned above.

We would be happy to work with you to find the right solution for your project. Adapted to your building project, you will receive a perfectly matched system. Project-specific constructions and adaptations can be found in the offer documents.

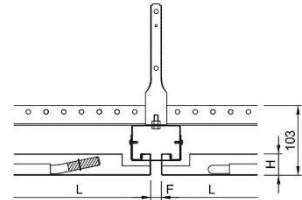
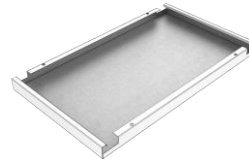


## Ceiling elements

### Plafotherm® E 213 type 1

#### Hook-On

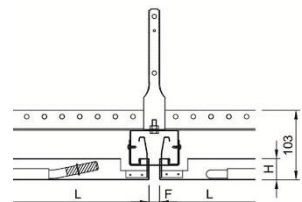
Length (L)	500 - 3,000 mm
Width (B)	200 - 1,250 mm
Height (H)	30, 50 mm
Joint width (F)	10, 15, 20, 25, 30 mm



### Plafotherm® E 213 type 3

#### Hook-On, Swing-Down

Length (L)	500 - 3,000 mm
Width (B)	200 - 1,250 mm
Height (H)	30, 50 mm
Joint width (F)	10, 15, 20, 25, 30 mm

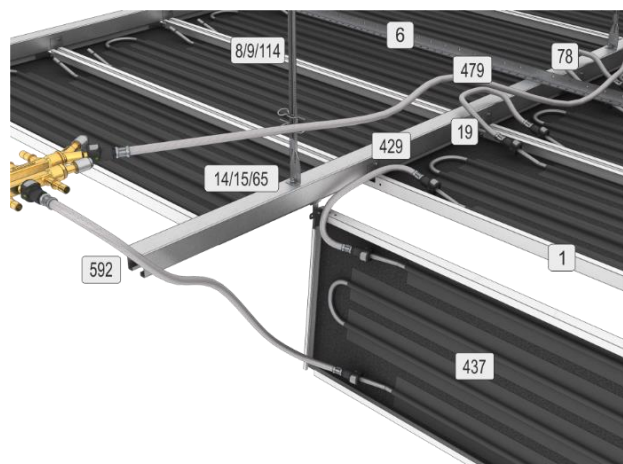


## Technical data

Material ceiling panel	galvanised sheet steel
Weight	approx. 14 - 16 kg/m <sup>2</sup> (without fixtures/installations)
Serviceability	swing-down, removable without tools
Wall connection options	L-angle, shadow gap trim, open wall connection

## Component list

1	metal ceiling panel
6	L-profile 28
8/9/114	vernier suspension
14/15/65	screwing
78	self-drilling screw hexagon head
429	spacer for double hook-on profile 54
437	heating and cooling coil
479	PlafoTube® connecting/connection hose
505	fit-up aid
592	double hook-on profile 54





## Acoustics

### Room acoustics

Rated sound absorption coefficient	DIN EN ISO 11654	$\alpha_w$	0.45 (L) - 0.80
Sound absorption class	DIN EN ISO 11654		D - B
Noise Reduction Coefficient	ASTM C 423	NRC	0.60 - 0.80

## Fire protection

### Building material class

Building material class	DIN EN 13501-1	A2 - s1, d0
Building material class	ASTM E 84	Class A

## Durability

Exposure class	DIN EN 13964	A
----------------	--------------	---

## HVAC

### Heating and cooling

Heating and cooling technology	Plafotherm® V2A	Plafotherm® Cu	Plafotherm® Cu Acoustic
Nominal cooling capacity (10 K) according to EN 14240 in relation to the active area	109 W/m <sup>2</sup>	112 W/m <sup>2</sup>	102 W/m <sup>2</sup>
Nominal heating capacity (15 K) according to EN 14037:2003 in relation to the active area	123 W/m <sup>2</sup>	126 W/m <sup>2</sup>	118 W/m <sup>2</sup>

## Sustainability

Product self-declaration	Self-declaration according to ISO 14021
Environmental product declaration	EPD according to EN 15804 / ISO 14025
Circular Economy	Cradle to Cradle Certified® Silver
French VOC Regulation	Emission class A+

## Surfaces

Powder coatings	<u>COLOURline - Powder coating</u> <u>MOODline - Powder coating, deep matt</u> <u>ARTline - Decorative powder coating</u> <u>GRAPHICline - Digital print</u>
Perforations	<u>BASICline - Standard perforations</u> <u>REGULARline - Further perforations</u>

## Statics

Seismic safety	qualification according to AC 156/Eurocode/SIA 261
----------------	--



## Certification

CE marking	The ceiling system is a harmonised construction product acc. to regulation (EU) No. 305/2011 (Construction Products Regulation) and EN 13964: Suspended ceilings – Requirements and test methods.
TAIM e. V.	The ceiling system fulfils the requirements of the "Technical Manual Metal Ceilings" (TMMC) of TAIM e. V. (Association of Industrial Metal Ceiling Manufacturers).

## Additional equipment

Acoustic inlays	<u>Acustica - Acoustic fabric inlay</u> <u>Insula - Mineral wool inlay in acoustic foil</u>
Ventilation components	<u>AirBox S - Supply air elements</u> <u>AirBox E - Exhaust air elements</u> <u>AirBeam Basic - Standard Heated/Chilled beam</u> <u>AirBeam Discreet - Discreet Heated/Chilled beam</u>
Hydraulic components	<u>PlafaTube® MQC - Connecting/Connection hose with MultiQuickConnect</u> <u>Fittings - Distribution system</u>
Luminaires	Lindner luminaires and luminaires from other manufacturers possible <u>IS 17 - Integrated Luminaire for general areas</u> <u>IS 22 - Integrated Luminaire for monitor work stations</u> <u>IS 450 - Integrated Luminaire for Office and General areas</u> <u>LK 73 - Light channel</u> <u>QZI - Integrated luminaire with cell louvres</u> <u>DPL - Integrated luminaire for post cap ceilings</u>

## Applications

