



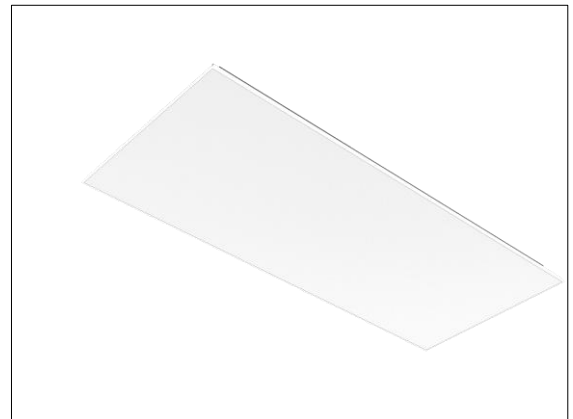
## Plafotherm® DS Tabs 125

### Metal Canopy Ceiling for concrete core activation

#### Product description

Plafotherm® DS Tabs 125 is a thermo-active canopy that is thermally connected to the activated concrete ceiling. The building mass remains as thermal energy storage and the room is acoustically regulated thanks to the high sound absorption of the canopy. The radiant surface of the concrete core is reflected via the metal ceiling surface. Moreover, this system impresses with reduced energy consumption and low CO<sub>2</sub> emissions. Vertical or angled edges of the canopy as well as an individual arrangement offer free design options in your rooms.

- acoustically effective solution to improve room acoustics for buildings with concrete core activation
- building mass remains as thermal energy storage
- reflection of the radiation surface of the concrete core via the metal ceiling surface
- design freedom thanks to an individual arrangement of canopies
- optionally with vertical or angled edge
- low CO<sub>2</sub> emissions due to reduced energy consumption
- hygienic and easy to clean
- can be combined with Plafotherm® DS 320



#### Project solutions

This product data sheet refers to the standard version of the product mentioned above. We would be happy to work with you to find the right solution for your project. Adapted to your building project, you will receive a perfectly matched system. Project-specific constructions and adaptations can be found in the offer documents.

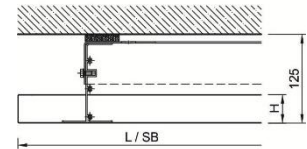
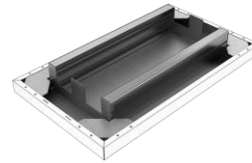


## Ceiling elements

### Plafotherm® DS Tabs 125 type 1

#### 90°-turn-up as individual/border or central panel

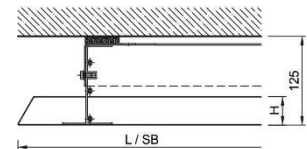
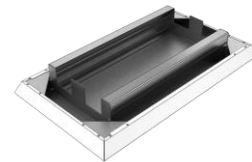
Length (L)	700 - 3,000 mm
Width (B)	600 - 1,400 mm
Height (H)	50 mm
Canopy length (SL)	700 - 3,000 mm
Canopy width (SB)	600 - 1,400 mm



### Plafotherm® DS Tabs 125 type 2

#### 65°-turn-up as individual panel

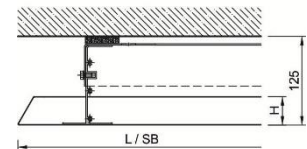
Length (L)	700 - 3,000 mm
Width (B)	600 - 1,400 mm
Height (H)	50 mm
Canopy length (SL)	700 - 3,000 mm
Canopy width (SB)	600 - 1,400 mm



### Plafotherm® DS Tabs 125 type 3

#### 65°-turn-up as border panel for extension on short side

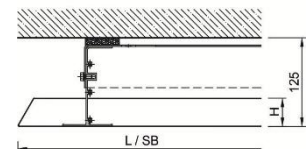
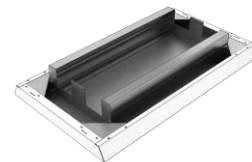
Length (L)	700 - 3,000 mm
Width (B)	600 - 1,400 mm
Height (H)	50 mm
Canopy length (SL)	700 - 3,000 mm
Canopy width (SB)	600 - 1,400 mm



### Plafotherm® DS Tabs 125 type 4

#### 65°-turn-up as central panel for extension on short side

Length (L)	700 - 3,000 mm
Width (B)	600 - 1,400 mm
Height (H)	50 mm
Canopy length (SL)	700 - 3,000 mm
Canopy width (SB)	600 - 1,400 mm



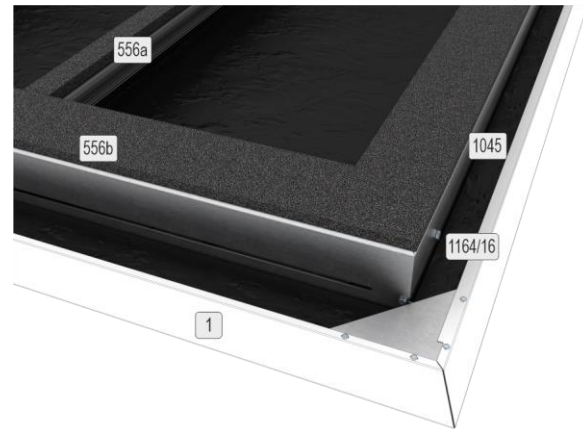


## Technical data

Material ceiling panel	galvanised sheet steel
Weight	approx. 12 - 14 kg/m <sup>2</sup> (without fixtures/installations)
Serviceability	removable

## Component list

1	metal ceiling panel
556	contact/compensation strips
1045	base frame 125
1164/16	screwing



## Acoustics

### Room acoustics

Rated sound absorption coefficient	DIN EN ISO 11654	$\alpha_w$	0.90 - 0.95 (L)
Sound absorption class	DIN EN ISO 11654		A
Noise Reduction Coefficient	ASTM C 423	NRC	1.05

## Fire protection

### Building material class

Building material class	DIN EN 13501-1	A2 - s1, d0
Building material class	ASTM E 84	Class A

## Durability

Exposure class	DIN EN 13964	A
----------------	--------------	---

## HVAC

### Heating and cooling

Occupancy 30 % (canopy area to room area)	94 - 98 %
Occupancy 50 %	90 - 97 %



## Combinable with

Heated/Chilled ceilings	<u>Plafotherm® DS 320</u>
-------------------------	---------------------------

## Sustainability

Product self-declaration	Self-declaration according to ISO 14021 possible
Environmental product declaration	EPD according to EN 15804 / ISO 14025
Circular Economy	Cradle to Cradle Certified® Silber

## Surfaces

Powder coatings	<u>COLOURline – Powder coating</u> <u>MOODline – Powder coating, deep matt</u> <u>ARTline – Decorative powder coating</u> <u>GRAPHICline – Digital print</u>
Perforations	<u>BASICline – Standard perforations</u> <u>REGULARline – Further perforations</u>

## Certification

CE marking	The ceiling system is a harmonised construction product acc. to regulation (EU) No. 305/2011 (Construction Products Regulation) and EN 13964: Suspended ceilings – Requirements and test methods.
TAIM e. V.	The ceiling system fulfils the requirements of the "Technical Manual Metal Ceilings" (TMMC) of TAIM e. V. (Association of Industrial Metal Ceiling Manufacturers).

## Additional equipment

Acoustic inlays	<u>Acustica – Acoustic fabric inlay</u> <u>Insula – Mineral wool inlay in acoustic foil</u>
-----------------	--



## Applications



Plafotherm® DS Tabs 125 combined with Plafotherm® DS 320