

Plafotherm® All in One

Complete solution for pleasant indoor climate

Product description

Large-sized metal canopy ceilings with integrated heating/cooling technology and perforated surface are already multifunctional ceiling systems: they ensure a pleasant climate, good room acoustics and modern design. The complete solution Plafotherm® All in One also combines the components ventilation and lighting. Invisible ventilation elements and integrated lighting solutions provide you with a variety of designs. Thus, you get the perfect complete solution for your project – all from a single source.

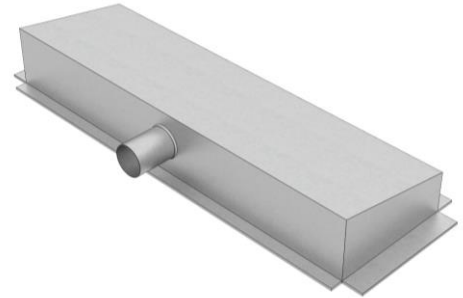
Applications



Ventilation | Invisible ventilation elements

AirBox S – Supply air elements

	AirBox S80	AirBox S135
Length	700 mm	700 mm
Width	350 mm	350 mm
Height	150 mm	175 mm
Connection	DN 100	DN 125
Volume flow rate	80 m ³ /h	135 m ³ /h
Sound pressure level L _{WA}	22 dB(A)	22 dB(A)
Serviceability	removable and cleanable acc. VDI 6022	

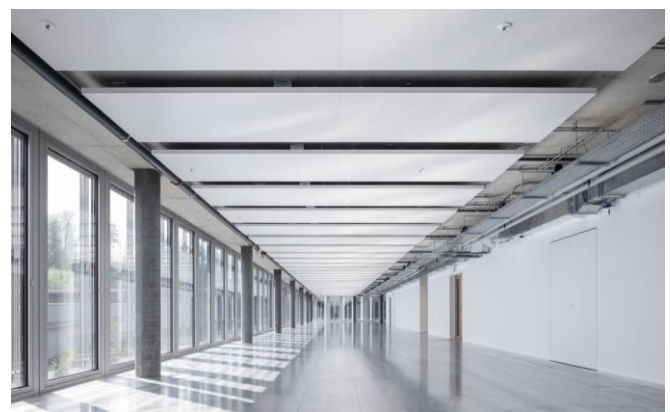


AirHybrid – Hybrid ventilation elements

	AirHybrid S60	AirHybrid S90
Length	600 mm	700 mm
Width	300 mm	300 mm
Height	110 mm	110 mm
Connection	DN 80	2 x DN 80
Volume flow rate	50 - 70 m ³ /h	70 - 90 m ³ /h
Nominal volume flow rate	60 m ³ /h	90 m ³ /h
Differential pressure	60 Pa	55 Pa
Sound pressure level L _{WA}	23 dB(A)	24 dB(A)
Serviceability	removable and cleanable acc. VDI 6022	



Applications



Lighting

Integrated lighting



Lighting in post cap



QZI - 900 2.5

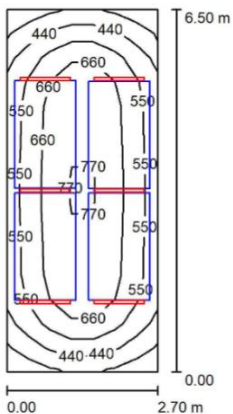
Lumen	2,700 Lumen
Power	19 Watt
Length (L)	843 mm
Width (B)	52 mm
Height (H)	38 mm
Voltage	220 – 240 V / 50 – 60 Hz
Protection class	1
Protection type	IP 20
Ballast	switchable, optional: DALI dimmable
Cover	Cell louvre
Light colour	4,000 K, optional: 3.000 K



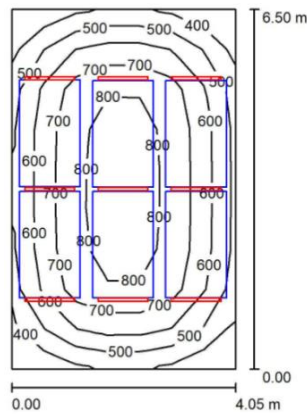
Light calculation

Standard-compliant monitor workstation lighting with very good glare control and a minimum illuminance of 500 lux is guaranteed for all variants.

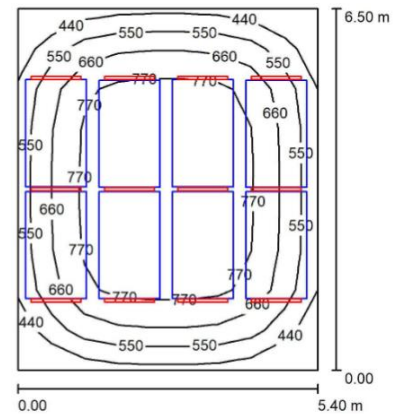
2 canopy ceilings



3 canopy ceilings



4 canopy ceilings



Variants

	Series DS	Series AirBox	Series AirHybrid
Version Standard	✓	✗	✗
Version Standard + Lighting	✓	✗	✗
Version Acoustics	✓	✓	✓
Version Acoustics + Lighting	✓	✓	✓

Technical data

Material	galvanised sheet steel
Canopy length (SL)	4,000 mm (two-part)
Canopy width (SB)	1,100 mm
Height (H)	50 - 175 mm
Weight	approx. 53 - 60 kg/canopy ceiling

Acoustics

Room acoustics

Version Standard

Rated sound absorption coefficient	DIN EN ISO 354	α_w	0.60
Sound absorption class	DIN EN ISO 11654		C

Version Acoustics

Rated sound absorption coefficient	DIN EN ISO 354	α_w	0.80
Sound absorption class	DIN EN ISO 11654		B

Fire protection

Building material class

Building material class	DIN EN 13501-1	A2 - s1, d0
Building material class	ASTM E 84	Class A

Durability

Exposure class	DIN EN 13964	A
----------------	--------------	---

HVAC

Cooling

Nominal cooling capacity (10 K) according to EN 14240 in relation to the total canopy area, plus air cooling capacity at a dimension of 4,000 mm x 1,100 mm

	Series DS	Series AirBox	Series AirHybrid
Version Standard	545 W/unit	x	x
Version Standard + Integrated lighting	490 W/unit	x	x
Version Standard + Lighting in post cap	475 W/unit	x	x
Version Acoustics	500 W/unit	480 W/unit	520 W/unit
Version Acoustics + Integrated lighting	445 W/unit	425 W/unit	475 W/unit
Version Acoustics + Lighting in post cap	430 W/unit	420 W/unit	455 W/unit

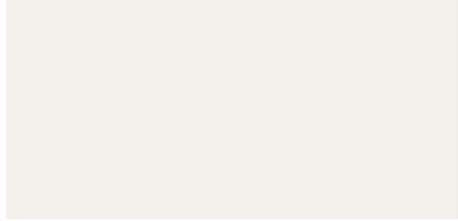
Heating

Nominal heating capacity (15 K) according to EN 14037:2003 in relation to the total canopy area at a dimension of 4,000 mm x 1,100 mm

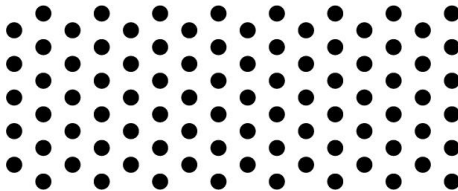
	Series DS	Series AirBox	Series AirHybrid
Version Standard	660 W/unit	x	x
Version Standard + Integrated lighting	590 W/unit	x	x
Version Standard + Lighting in post cap	570 W/unit	x	x
Version Acoustics	610 W/unit	575 W/unit	600 W/unit
Version Acoustics + Integrated lighting	545 W/unit	510 W/unit	550 W/unit
Version Acoustics + Lighting in post cap	525 W/unit	505 W/unit	530 W/unit

Surfaces

Powder coating

Product line	COLOURline	
Colour	RAL 9016	
Colour chart	RAL Classic	
Colour number	9016	
Colour name	traffic white	
Gloss	silk matt	

Perforation

Product line	REGULARline	
Perforation	Rv 1,8 - 20	
Hole diameter	1.8 mm diagonal pitch	
Open area	20 %	

Project solutions

This product data sheet refers to the standard version of the product mentioned above.

We would be happy to work with you to find the right solution for your project. Adapted to your building project, you will receive a perfectly matched system. Project-specific constructions and adaptations can be found in the offer documents.