



Glazing Multiclean LVT 437

Description

The glazing system consists of two separated aluminium frames with glued on glass panels. These frames are hooked into the system stands on each side.

This glazing system with flush adhesion and laterally hooked in circular aluminium frames highlights the transparency of the ambience.

The unique adhesive technology does not require edge printing and guarantees maximum reliability and durability. The most various types of construction, from room-high glazing or partial glazing to overhead glazings (optional with vertical or horizontal glass segmentation) can be realized.

The glazing system excels in high air tightness and is easy to clean and disinfect. GMP- and DIN EN ISO 14644 suitable design. The surface is even, flush, suitable for flush installation and does not contain any outgassing or particle emitting materials. The partition joints are optionally sealed with a clean room suitable sealant.

Field of application

- Pharmaceutical industry and medical engineering
- Electronics and semiconductor industry
- Microsystems-, precision mechanics- and optical industry
- Laboratories and research centers
- Surface treatment technology
- Data processing centers



For more information, visit our website
www.Lindner-Group.com

LINDNER SE | CLEAN ROOMS

Bahnhofstrasse 29 | 94424 Arnstorf | Germany | Tel. +49 (0)8723 20-3671 | Reinraumtechnik@Lindner-Group.com | www.Lindner-Group.com

We reserve the right to adapt and amend all details and information at any time. We do not accept liability for information that is inadvertently incorrect. This document is protected by copyright law. Processing, unauthorised use or reproduction and public distribution are not permitted. Reproduction and distribution to third parties are only permitted with our express consent.

System description

Substructure	Consisting of folded or roll formed steel profiles, galvanized or varnished
Glazing element	<p>Consists of a two-piece aluminium frame onto each of which a glass pane is glued. With this flush design the visible width of the adhesive surface is 20 mm. For the visible width it is possible to be as wide as 32 mm for ceiling junctions (tolerance compensation).</p> <p>The two frames hook into a stud construction.</p> <p>Standard glass thicknesses are 6 mm toughened safety glass or 8mm laminated safety glass.</p>
Design options	<ul style="list-style-type: none"> • room-high glazing • balustrade glazing • overhead light glazing • available with venetian blinds and roller blinds
Joints and connections	<p>The joints between the elements are sealed with cleanroom suitable material or with a clamping profile.</p> <p>Connection to floor, ceiling and walls according to the requirements.</p>



Technical data

Element thickness (partition thickness)	100 mm
Standard with dimension (axial dimension) ²⁾	1200 mm (standard); ¹⁾ up to max. 1500 mm
Glazing height	up to max. 3.500 mm (undivided up to 3000 mm) ¹⁾
Weight	35 - 40 kg/m ² (room-high glazing)
Sound Insulation	up to 46 dB R _{w,P} acc. DIN EN ISO 140-3 (room-high glazing)
Fire Protection Classification	<ul style="list-style-type: none"> • F0 • F30 acc. to DIN 4102 ²⁾ • EI30, EI60 acc. to EN 13501-2 ²⁾
Width of joints between elements	4 mm (standard)
Glass Thickness / Quality	6 mm or 8 mm ESG ³⁾ , VSG ⁴⁾



For more information, visit our website
www.Lindner-Group.com

LINDNER SE | CLEAN ROOMS

Bahnhofstrasse 29 | 94424 Arnstorf | Germany | Tel. +49 (0)8723 20-3671 | Reinraumtechnik@Lindner-Group.com | www.Lindner-Group.com

We reserve the right to adapt and amend all details and information at any time. We do not accept liability for information that is inadvertently incorrect. This document is protected by copyright law. Processing, unauthorised use or reproduction and public distribution are not permitted. Reproduction and distribution to third parties are only permitted with our express consent.

Bonding

Type: Following ETAG 002 – structural glazing

Material: Two-component silicon

Colour: Similar to light grey, white, black

Temperature resistance: -50° C up to +150° C

Radiation Protection

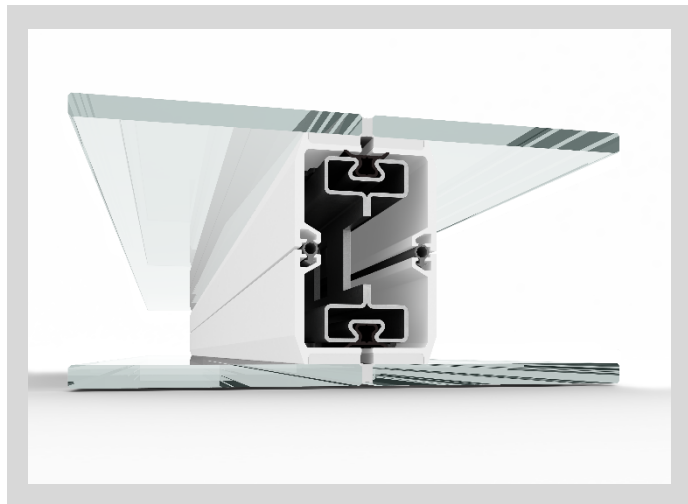
Depending on the requirements and design, the Lindner glazing Life 437 is also available with radiation protection.

- 1) Installation area according to statics (EB1 or EB2); non-bearing partition system acc. to DIN 4103
- 2) with triple glazing
- 3) ESG toughened safety glass
- 4) VSG laminated safety glass

Customized solutions are available according to the requirements of the project.

Applicable standards

- **DIN 18202** Toleranzen im Hochbau – Bauwerke (building construction tolerances – buildings)
- **DIN 1249** Flachglas im Bauwesen; Glaskanten; Begriff, Kantenformen und Ausführungen (flat glass in building industry; edge of glass pane; term, edge shape and finish)
- **DIN EN ISO 12543** Glas im Bauwesen - Verbundglas und Verbund-sicherheitsglas (glass in building industry – laminated glass and laminated safety glass)



For more information, visit our website
www.Lindner-Group.com

LINDNER SE | CLEAN ROOMS

Bahnhofstrasse 29 | 94424 Arnstorf | Germany | Tel. +49 (0)8723 20-3671 | Reinraumtechnik@Lindner-Group.com | www.Lindner-Group.com

We reserve the right to adapt and amend all details and information at any time. We do not accept liability for information that is inadvertently incorrect. This document is protected by copyright law. Processing, unauthorised use or reproduction and public distribution are not permitted. Reproduction and distribution to third parties are only permitted with our express consent.