



Glazing Multiclean COP 137

Description

The glazing system consists of two separated aluminium frames with glued on glass panels. These frames are hooked into the system stands on each side.

This glazing system with flush adhesion and laterally hooked in circular aluminium frames highlights the transparency of the ambience.

The unique adhesive technology does not require edge printing and guarantees maximum reliability and durability. The most various types of construction, from room-high glazing or partial glazing to overhead glazings (optional with vertical or horizontal glass segmentation) can be realized.

An integration of electric blinds, roller blinds or radiation protections is available on request.

The glazing system excels in high air tightness and is easy to clean and disinfect. GMP- and DIN EN ISO 14644 suitable design. The surface is even, flush, suitable for flush installation and does not contain any outgassing or particle emitting materials. The partition joints are optionally sealed with a clean room suitable sealant



For more information, visit our website
www.Lindner-Group.com

LINDNER SE | CLEAN ROOMS

Bahnhofstraße 29 | 94424 Amstorf | Germany | Tel. +49 (0)8723 20-3671 | Reinraumtechnik@Lindner-Group.com | www.Lindner-Group.com

We reserve the right to adapt and amend all details and information at any time. We do not accept liability for information that is inadvertently incorrect. This document is protected by copyright law. Processing, unauthorised use or reproduction and public distribution are not permitted. Reproduction and distribution to third parties are only permitted with our express consent.

System description

Substructure	The substructure consists of galvanised or coated folded steel profiles.
Glazing	Substructure consisting of two aluminium frames with one glass panel glued onto each frame. Flush design with 32 mm visible bonding along the edges. Both frames are hooked into the stud construction. <ul style="list-style-type: none"> Standard glass thicknesses are 6 mm toughened safety glass or 8 mm laminated safety glass.
Design options	<ul style="list-style-type: none"> Room-high glazing Breast-high glazing Overhead glazing Blinds for view protection available
Joints and connections	The element joints are sealed with cleanroom suitable material or with synthetic seal. Floor, ceiling and wall connections according to the requirements.



Technical data

Partition thickness	from 150 mm
Axial grid	1200 mm (standard); ¹⁾ up to max. 1500 mm (depending on panelling)
Glazing height	up to max. 3.500 mm (non split 3000 mm) ¹⁾
System weight	35 - 40 kg/m ² (room-high glazing)
Sound insulation	up to 46 dB R _{w,P} acc. to DIN EN ISO 140-3 (room-high glazing)
Fire protection	<ul style="list-style-type: none"> F0 F30 acc. to DIN 4102 ²⁾ EI30, EI60 acc. to EN 13501-2 ²⁾
Joint width	4 mm (standard)
Pane type and thickness	6 mm or 8 mm ESG ³⁾ , 8 mm VSG ⁴⁾
Adhesive	Type: Structural glazing method acc. to ETAG 002 Temperature resistance: -50° C up to +150° C Colour: light grey, white, black

¹⁾ Installation area acc. to statics (installation area 1 or 2); non-load-bearing partition acc. to DIN 4103

²⁾ with triple glazing

³⁾ ESG toughened safety glass

⁴⁾ VSG laminated safety glass



For more information, visit our website
www.Lindner-Group.com

LINDNER SE | CLEAN ROOMS

Bahnhofstraße 29 | 94424 Amstorf | Germany | Tel. +49 (0)8723 20-3671 | Reinraumtechnik@Lindner-Group.com | www.Lindner-Group.com

We reserve the right to adapt and amend all details and information at any time. We do not accept liability for information that is inadvertently incorrect. This document is protected by copyright law. Processing, unauthorised use or reproduction and public distribution are not permitted. Reproduction and distribution to third parties are only permitted with our express consent.

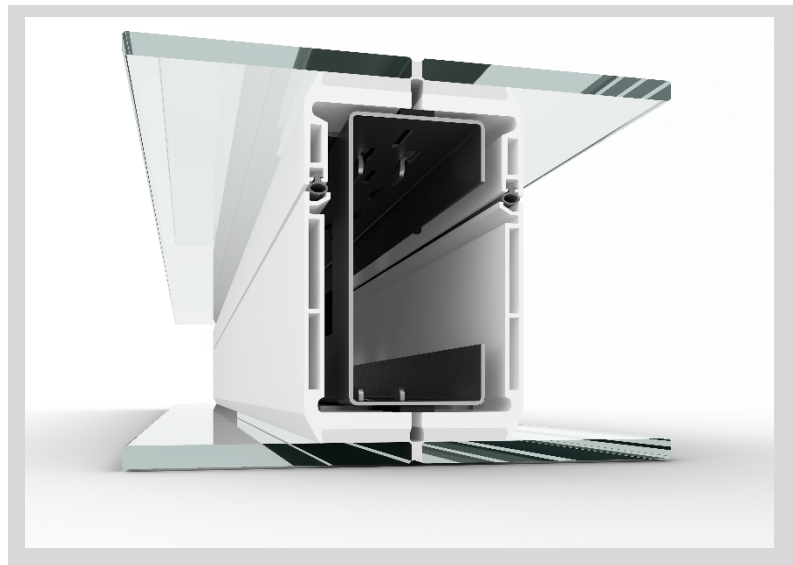
Radiation protection

Depending on the requirements and design a version with radiation protection is possible.

Customized solutions are possible on request.

Applicable standards

- **DIN 18202** tolerances in building construction – branches of building industry
- **DIN 1249** flat glass in building; glass edges; term, edge shapes and execution
- **DIN EN ISO 12543** glass in building; laminated glass and laminated safety glass



For more information, visit our website
www.Lindner-Group.com

LINDNER SE | CLEAN ROOMS

Bahnhofstraße 29 | 94424 Amstorf | Germany | Tel. +49 (0)8723 20-3671 | Reinraumtechnik@Lindner-Group.com | www.Lindner-Group.com

We reserve the right to adapt and amend all details and information at any time. We do not accept liability for information that is inadvertently incorrect. This document is protected by copyright law. Processing, unauthorised use or reproduction and public distribution are not permitted. Reproduction and distribution to third parties are only permitted with our express consent.