

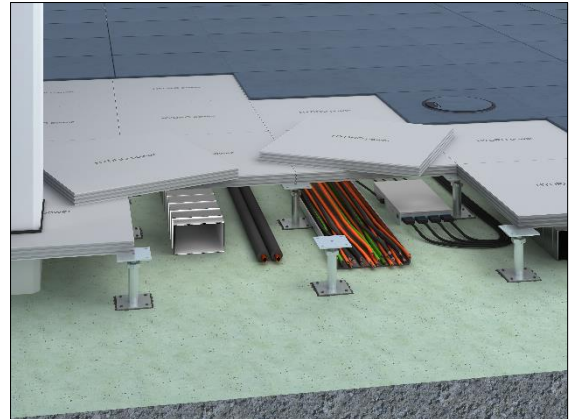


## HYDRO power

### Dry hollow floor for humid and heavy-duty areas

The dry hollow floor system HYDRO power was specifically developed for heavy duty areas with increased humidity stress. The humidity-resistant hollow floor system HYDRO power consists of high-density cement fibre panels with optimised panel mixture which effectively prevents the absorption of water. The gluing of the HYDRO panels is made with a special tongue and grooving at the edges of the panels creating a closed load-bearing layer. The substructure consists of height-adjustable zinc-coated steel pedestals from our own production which forms the necessary cavity for installations.

- suited for rooms with increased humidity stress
- suited for heavy-duty areas
- very high loadability
- quick installation
- water-resistant
- mould-resistant
- non-combustible



### Samples for building portfolio

Research Rooms, Public Swimming Pools, Gymnasiums, Operating Theatres, Commercial Kitchens, Restaurants and Canteens, Hotels and Resorts, Sauna and Wellness Areas, Laboratories and Research Facilities, Production Facilities, Stations, Subways and Tunnels, Entrance Areas



### Technical details

Weight	75 – 85 kg/m <sup>2</sup>	
Panel thickness	40.5 – 44.5 mm	
Standard pedestal height	40 – 2,000 mm	
Pedestal grid	593 mm x 593 mm	

### Static

Load class	EN 13213	6
Concentrated load (breaking load)	EN 13213	10 kN (20 kN) – 15 kN (30 kN)
Seismic safety		Earthquake-proof construction possible

### Fire protection

#### Reaction to fire performance

Reaction to fire performance	CWFT (96/603/EG)	A1
Designation by the building authorities	CWFT (96/603/EG)	non-combustible

#### Fire resistance

Fire resistance	EN 13501-2	REI 30 possible with additional measures
-----------------	------------	--



## Acoustics

### Building acoustics

Weighted sound reduction index without covering	DIN EN ISO 10140-2	R <sub>w</sub>	64 dB
Reduction of impact sound pressure level without covering	DIN EN ISO 10140-1	ΔL <sub>w</sub>	15 dB

### Sustainability

Self-declaration	self-declaration in acc. with ISO 14021 possible
Environmental product declaration	verified EPD in acc. with EN 15804 / ISO 14025 possible
FSC	optional (TUEV-COC-000515)
French VOC Regulation	Emission class A+

### Floor coverings

Suitability of coverings	Ceramics, natural stone, coatings, elastic coverings
--------------------------	--