

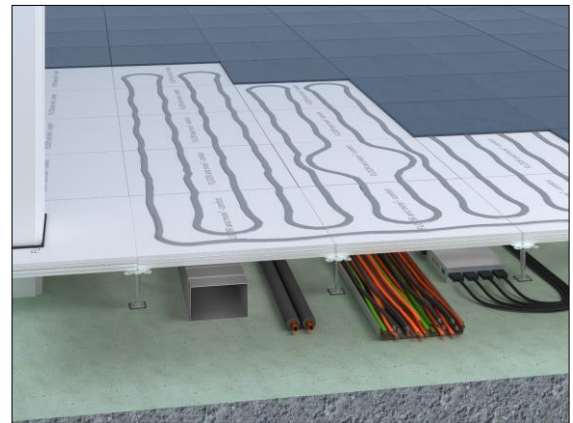


FLOOR and more[®] comfort

Dry hollow floor with underfloor heating

The dry hollow floor system FLOOR and more[®] comfort creates a pleasant environment for the occupier by its intelligent heating and cooling. The hollow floor panels type comfort consist of fibre-reinforced calcium sulphate. Pre-milled grooves for taking up the heating and cooling lines are closed after the installation by a filling compound. The gluing of the FLOOR and more[®] panels is made with a special tongue and grooving at the edges of the panels which are forming a closed load bearing layer. The substructure consists of height-adjustable zinc-coated steel pedestals from our own production which form the necessary cavity for installations.

- quick reaction period with heating and cooling
- nearly all covering types possible
- environment-friendly due to low flow temperature
- heating performance 66 - 76 W/m²
- cooling performance 33 - 40 W/m²



Samples for building portfolio

Assembly Rooms, Common Rooms, Facilities for Meetings, Conventions and Conferences, Offices, Broadcasting Rooms, Television Studios, Stage and Studio Rooms, Banks, Sales Areas, Museums, Cinemas and Theatres, Places of Assembly, Shopping Centres, Library Rooms, School, School of Higher Education, Entrance Areas, Escape Routes, Court Houses, Government Buildings



Technical details

Weight	52 - 70 kg/m ²	
Panel thickness	40 - 44 mm	
Standard pedestal height	40 - 2,000 mm	
Pedestal distance	600 mm x 600 mm	

Statics

Load class	DIN EN 13213	3 - 6
Concentrated load (Breaking load)	DIN EN 13213	4 kN (8 kN) – 7 kN (14 kN)
Earth quake safety		earthquake-proof construction possible



Fire protection

Building material class of the carrier panel

Building material class	DIN 4102-1	A2
Building material class	DIN EN 13501-1	A1
Designation by the building authorities	DIN 4102-1	non-combustible
Designation by the building authorities	DIN EN 13501-1	non-combustible

Fire resistance

Fire resistance	DIN 4102-2	F30 possible with additional measures
Fire resistance	DIN EN 13501-2	REI 30 possible with additional measures

HVAC

Tube distance 100 mm

Heating performance	DIN EN 1264-2	76 W/m ²
Cooling performance	DIN EN 1264-5	40 W/m ²
Heating tube		Ø 17 x 2.0 mm

Tube distance 150 mm

Heating performance	DIN EN 1264-2	66 W/m ²
Cooling performance	DIN EN 1264-5	33 W/m ²
Heating tube		Ø 17 x 2.0 mm

Sustainability

FSC	optional (TUEV-COC-000515)
-----	----------------------------

Floor coverings

Suitability of coverings	elastic coverings, textile coverings, loose-laid tiles, parquet, stone and ceramic coverings (suitability for underfloor heating required)
--------------------------	--