

Concepts

Products

Service



**You can see the difference.**

Lindner Products: the perfect blend of beauty and functionality.



**Lindner**

Building New Solutions

# Building new solutions.

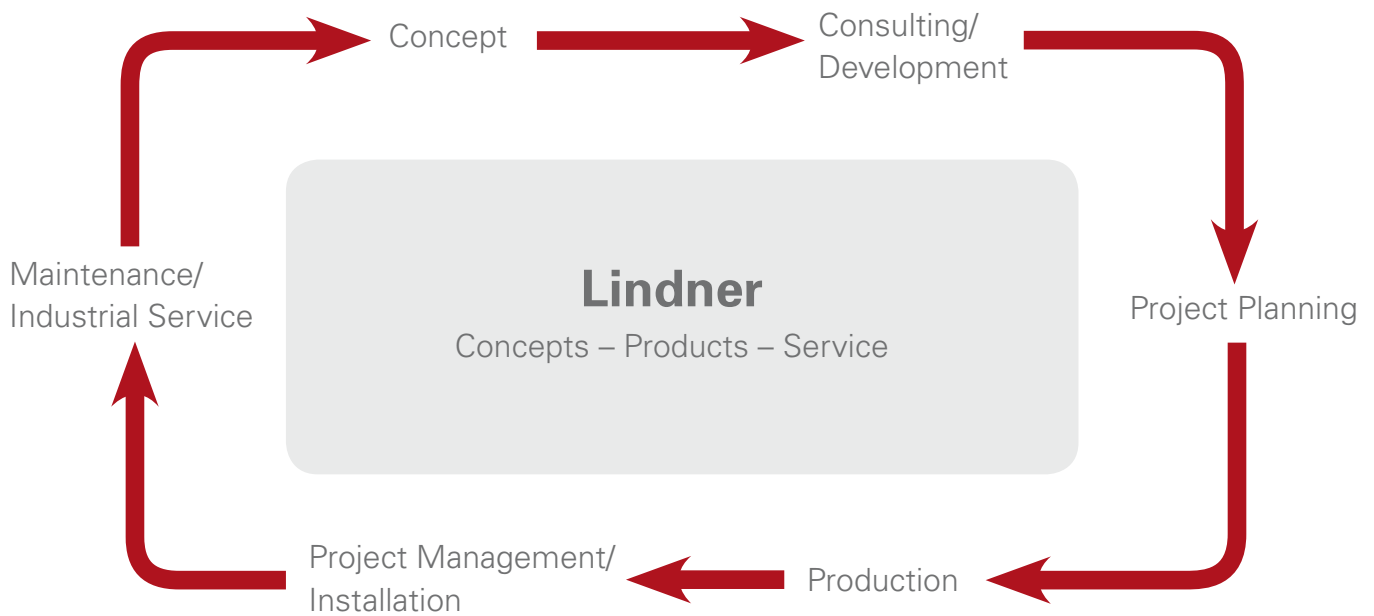
Lindner undertakes major projects worldwide in all areas of interior fit-out, insulation technology, industrial services and building facades. From pre-planning through to project completion Lindner is your partner of choice.

The Company's extensive manufacturing capability enables quality to be strictly maintained whilst allowing maximum flexibility to meet individual project requirements.

Environmental considerations are fundamental to all Lindner's business principles.

Through partnerships with clients Lindner turns concepts into reality.





## Everything from one source.

We offer you all our products and services individually or as a customised process chain – starting from your idea all the way to turnkey handover. Procedures intelligently coordinated with each other guarantee made-to-measure solutions and efficient construction with far fewer interfaces.

# To us, “Building New Solutions” means fulfilling your dreams – with Lindner Concepts, Products and Services.

To bring your **concepts** to life, our numerous, highly specialised experts will work with you and with our innovative technologies to develop integrated all-in-one solutions for special projects, such as concert halls, airport terminals and clean rooms. In doing so, we will be at your side with numerous highly specialised experts as well as innovative technologies.

Our **product** portfolio welcomes the challenge of special requirements, and having our own research, development and manufacturing facilities allows us to fulfil your requests at any time. With numerous production sites in various countries, we can provide you with both system solutions and customised solutions within a very short period of time. Processes which are kind to the environment are our greatest concern and for this reason we only use tested and approved materials. Our dedicated Environmental Management policy guarantees, amongst other things, a reduction in emissions and energy consumption. Our continual quality inspection ensures maximum product reliability, a fact of which we are proud – our products are the cornerstone of our company.

We offer you a professional, all-encompassing **service** at every stage of your project, from early planning through to completion. Whether it's a new construction or a redevelopment, experienced specialist departments and our international network of subsidiaries make a large pool of qualified skilled workers available wherever needed. Long-standing relationships with supply chain partners and extensive in-house manufacturing capabilities guarantee fast delivery and installation for all our products.

Profit from our three areas of activity for the successful implementation of your special requirements.

## Choosing Lindner you have:

Lindner Concepts:  
Tailored solutions specifically geared to satisfy individual project requirements

Lindner Products:  
Quality materials and systems to the very highest industry standards

Lindner Service:  
Comprehensive project management services

# Turning your project into a show-stealer.

Innovative product solutions from Lindner.

## **Discover what Lindner can offer:**

- Facades
- Steel & Glass
- Roofing Systems
- Ceiling Systems
- Lights and Lighting Systems
- Partition Systems
- Doors
- Floor Systems
- Heating and Cooling Technologies
- Dry Lining Systems

# Beauty with brains: Lindner Facades.

All Lindner products distinguish themselves by perfectly combining aesthetics and functionality. That's why building envelopes are much more to us than just a facade.



Peninsula Place, Greenwich, London

We create innovative systems and bespoke solutions using the highest technical standards, to meet your specifications and expectations. For us, no idea is impossible because our motto is "Building New Solutions"

Naturally this also applies to everything behind the facade. In the following pages you will discover our extensive range of products and the wide range of possibilities which Lindner can offer – and how we can turn even the most demanding projects into reality.

## For your individual facade we offer:

- Many years of experience
- Unique expertise
- Extensive specialised equipment
- Continuous research and development keeping us at the forefront of new technology and innovations



## Facades for projects that capture the attention.

By adopting a partnership approach to each customer Lindner delivers the planning, manufacture and installation expertise necessary to create the perfect solution for each project whether steel, aluminium, glass or other materials – and will identify the most appropriate one before tailoring it to meet the specific needs of the project. With the manufacturing carried out at Lindner's plant in Arnstorf, Germany, the quality of the finished facade is guaranteed.



No. 4 St Paul's Square, Liverpool  
Photo: © HUFTON+CROW



Photo: © Stadtwerke Konstanz

## Our strength: pioneering facade concepts.

The high-performance energy concept of Stadtwerke Konstanz Customer Centre is based on a customised solar facade by Lindner with a maximum power output of 23 kW<sub>p</sub>. Aptly-named "Energy Cube", this new construction will generate more energy than it consumes over its useful life.

Alongside the transparent facade elements there are also opaque surfaces that can be illuminated at will using different coloured LED lights.

# Building Sculptures: Lindner Steel & Glass.

Lindner Steel & Glass completes the company's portfolio for building envelopes – and the idea of offering a single source solution to our clients.

## **The ideal composition of Steel & Glass.**

How are we achieving this? By merging all technical, economical and visual requirements into a high quality product 'made in Germany'. From as early as planning and development stage we not only seek to overcome the laws of gravity but to accomplish that in the best possible way – optimised in design, costs, and time.

Lindner Steel & Glass applies either unitised steel constructions, single skin or double layer structures as well as cable stiffened and tensile structures to carry out 3D free forms. **Materialize your visions.**

## **Modelling organic shapes for unique spaces.**

### **Lindner Steel & Glass:**

- Steel and Glass Structures
- 3D Free Forms
- Spatial Structures
- Tension Cable Systems
- Tensile Structures
- Smart Technology Structures

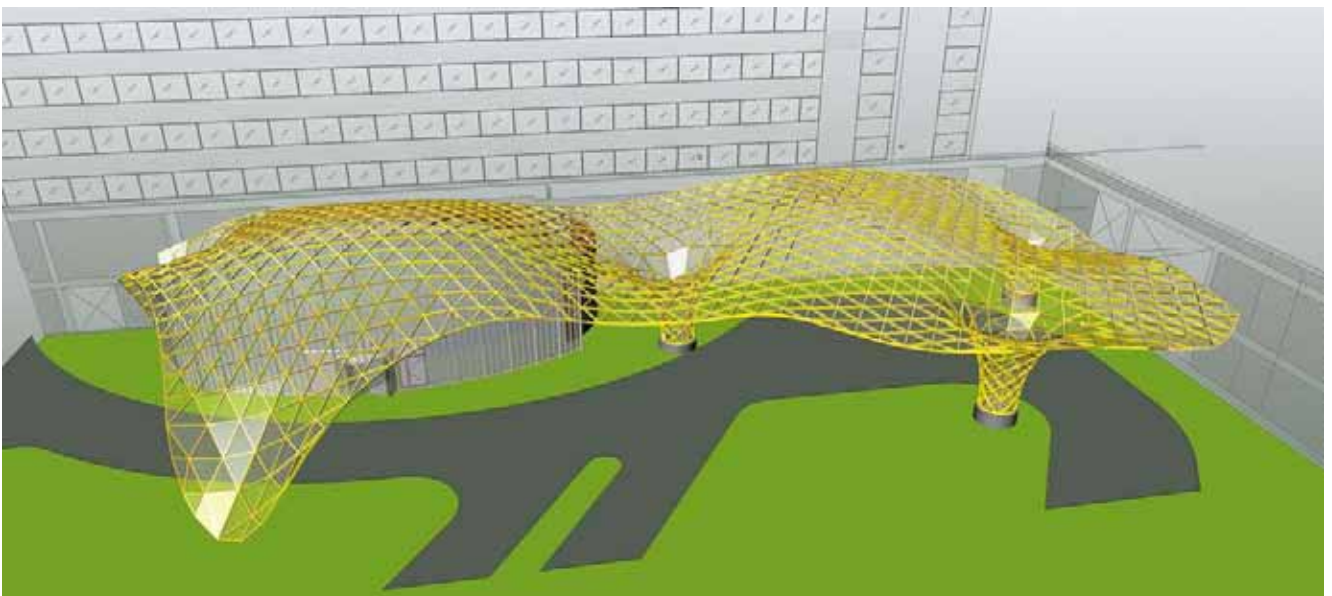






Photo: © Roman Antoschuk



North Terminal Extension, Gatwick Airport, London

# To wrap up your project safely: Lindner Roofing Systems.

Complete your building envelope with Lindner Roofing Systems. Whether the project is a new-build, conversion or a comprehensive refurbishment: our extensive experience in working with key technologies such as green roof solutions and off-site construction, enables us to meet high sustainability and thermal performance standards. Working closely with clients and key partners, we provide the most cost effective, efficient and technically compatible roofing solutions available. In doing so, health and safety and waste control are major site priorities.



Providing a sustainable and aesthetically pleasing solution for roofing structures.

**Benefit from the all-encompassing range of disciplines of Lindner Roofing Systems:**

- Glass Roofing
- Green Roofs
- Membrane Roofs
- Structural Waterproofing
- Photovoltaic Systems

# Answering a higher calling: Lindner Ceiling Systems.

Just right for those who  
want to go above and beyond.

## Discover the most complete range of ceiling options on the market:

- Post Cap ceilings
- Hook-On and Corridor ceilings
- Cassette ceilings
- Expanded Metal ceilings
- Honeycomb and Baffle ceilings
- Strip Panel ceilings
- Torsion Spring ceilings
- Canopy ceilings
- Fireproof ceilings
- Customised ceilings



The individuality of your projects is a positive challenge for us and one that we particularly look forward to. No matter if it's an office building, hotel, shopping centre or hospital: we will find the perfect solution not only for all internal and external areas but also for customised designs in underground train stations, airports, concert halls and many other specialist projects.

Ceiling solutions from Lindner are tailored towards any special requirements regarding:

- Maintenance friendliness
- Acoustics
- Fire protection
- Wind loads
- Seismic behaviour
- Surface properties



## Don't judge a ceiling just by its coating.

Our metal ceilings don't just provide you with a unique choice of surfaces and mechanical properties. Their high level of prefabrication and quality workmanship offers a significant reduction of on-site handling and, most importantly, a long product life-span, thus ensuring valuable advantages in life-cycle costs.



Projects shown, from top:  
DINZ, Dresden | Photo/Architecture: HWP Planungsgesellschaft mbH | Photographer: Peter Horn  
Abengoa Palmas Altas Campus, Seville | Photo: © Mark Bentley Photography  
VIP Lounge, Munich Airport | Planning: Tina Aßmann, Erich Gassmann, Munich |  
Lighting design: TROPP LIGHTING DESIGN, Weilheim | Photographer: © Florian Holzherr, Munich



You have unique requirements? We are happy to meet the challenge because we gladly develop customised ceilings to suit your exact requirements. Let your fantasies run wild: we will produce the most extraordinary shapes from a variety of materials for a variety of functions, should you so wish. **Lindner Customised Ceilings – just what you asked for.**



155 North Wacker Drive, Chicago  
Photo: ©Thomas Rossiter







# Perfect radiance: Lindner Lights and Lighting Systems.



Lujiazui Financial Building, Shanghai

Put your rooms in the best light.



Vnukovo Airport, Moskau  
Photo: © Leonid Borzenkov

At Lindner you will find the greatest variety of lighting solutions to suit your room concept. Whether integrated lighting for special architectural illumination, flexible downlights or multifunctional canopy ceilings: with our solutions you will always cast the right light onto your interiors.



Columbia Twins, Hamburg

## New solutions for individual highlights.

**Lindner is happy to develop ambitious customised solutions for you, whether for:**

- Airports
- Office complexes
- Hotels
- Shopping centres
- Public pools
- Fitness centres
- Exterior spaces
- Clean rooms

**We support you all the way: Lighting design and calculations.**

We work with you through the implementation of your construction and lighting projects, from design to delivery. Or you can avail yourself of individual Lindner services at any time. Just leave the lighting design and calculation to us; you can rely on our years of experience and depth of expertise.

Naturally, the effect your rooms have on your occupants also depends on the walls. Discover our great selection of innovative partition wall solutions on the next page.



# Divide and conquer your inner space: Lindner Partition Systems.

Shape your  
living and  
working  
worlds the  
way you  
want them.

Our partitions offer you a multitude of configuration possibilities for "Building New Solutions", giving your ingenuity free rein.

With our various glazed or partially-glazed solutions you can make enclosed spaces appear larger and more open and, of course, you determine how much of the inside you want seen from the outside.



Galvaniho Business Center, Bratislava



ADIDAS Laces, Herzogenaurach

Photo: © Werner Huthmacher, Berlin

## | Your Flexible Solution.

Room layouts in work areas often change quickly. Lindner partitions can be easily adapted to new situations – all systems work on the same basic structure and are distinguished by their high degree of “flexibility friendliness”. It’s good for you to always be flexible.

Lindner Partitions for every need:  
Fully opaque walls with a variety of surfaces,  
moveable walls, partially glazed walls,  
fully glazed walls and light feature walls.

# So your rooms stay connected: Lindner Doors.

Keeping a door open on creative ideas, we deliver tailored door solutions as well. Thanks to our years of experience in bespoke and special doors, we exceed all expectations when it comes to security, functionality and design.

## **Special requests are welcome.**

In fact, as many as you want: we gladly develop any customised solution in wood, glass, steel or aluminium for you in our own laboratories and product testing centres.

## **Don't let the sparks fly.**

In the case of fire, doors can be lifesavers. Lindner provides maximum safety when it comes to fire and smoke protection.

## **Don't let your business experience a break-in.**

Security also means protection from unlawful entry: Lindner has developed special deadbolts, safety locks and latches, so that burglars don't stand a chance.

## **Radiation? Please stay inside!**

Radiation-protective doors are required in laboratories and hospitals. Lindner offers the right solution for every area. We deliver doors with audible or visual access or with lead glass panes.

## **Need a few minutes in private?**

Sound protection is also important. Lindner Doors let you concentrate on work and discuss discreet matters "behind closed doors".





# Stepping out with class: Lindner Floor Systems.



RTL – Rheinhallen, Cologne

With raised and hollow flooring from Lindner, you can route data, communications, or in-house equipment intelligently. Cabling remains unseen but is accessible for maintenance at any time.

These innovative systems offer you a further advantage in that they can be used shortly after installation, allowing your workspace to be completed quickly and with confidence.

## **Our product range gives you the choice.**

Lindner has a long tradition of manufacturing flooring systems. We offer the most comprehensive product portfolio in the international market, allowing you to choose from a variety of solutions, e.g. raised and hollow flooring with calcium sulphate panels. We are among the few companies to manufacture all components ourselves – from raw material to final product.





## Lindner quality in all floor systems:

- In-house manufacturing facilities at several locations
- Many years of practical experience on construction sites
- Highest quality monitoring, both internally and through external institutes
- Largest product portfolio in the international market
- One of few calcium sulphate manufacturers worldwide

## FLOOR and more® – everything's possible.

FLOOR and more® is a jointless dry flooring system which can be installed quickly and which can be used after only one day – giving you complete freedom in interior construction.

Naturally FLOOR and more® is built to withstand the highest traffic, whether in a private home or in an office or industrial building.

### Your advantages for “more floor freedom”:

- Easy-to-lay dry flooring system
- Ready to use after one day
- Space for electric and computer installations
- Jointless surface
- High level of fire and sound proofing
- Additional functions such as heating and ventilation
- Ecologically friendly
- Can be installed anywhere



FLOOR and more® dry flooring at the LHI Campus in Pullach, near Munich.

# Providing a comfortable climate: Lindner Heating and Cooling Technologies.



Room temperature is very important for creating a pleasant living and working atmosphere. We have developed innovative heating and cooling technologies which allow you to constantly adjust each room to its optimal temperature – even when installed in an existing building.



**Just as individual as your requirements: Now you even get acoustics and cooling technologies under one roof.**

In office space, sound absorption, as well as temperature, plays a crucial role. This sound absorbing chilled ceiling regulates both – and works perfectly with Lindner Partition and Floor Systems.



## Plafotherm® Heated and Chilled Ceilings: the right technology for all temperatures.

### For the benefit of both floor and partition walls.

We also supply intelligent heating and cooling systems for floors and partition walls, allowing you to fulfill your dreams.

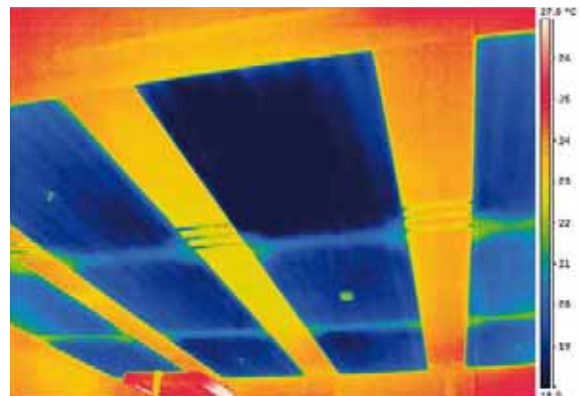
Just ask us: we will find the best solution for your project!

### Thermal imaging – our service for heating and cooling systems.

With our integrated approach, we also offer you appropriate support services for all our products and concepts. We carry out thermal imaging to check the performance of your heating and cooling systems.



FLOOR and more® comfort offers an integrated underfloor heating with highly effective heat reflection.



Thermal imaging measures heating and cooling system efficiency.

# Interior Fit-out done to perfection: Lindner Dry Lining Systems.

Obtain high-quality dry lining products and services from one source and benefit from Lindner's vast experience going back over four decades in interior fit-out.

Lindner ceilings, floors, partitions, glazing and doors are made to order and, wherever possible, factory-preassembled. This saves time and money and ensures that your project can be up and running as quickly as possible.

Combining these products with other fit-out materials, such as plasterboard, leaves nothing to be desired. Whether angled, curved or in unusual non-standard shapes – our knowledge and expertise has already proven itself in the implementation of innumerable representative areas, offices, function rooms, shopping centres and many other projects of a diverse nature.

Our engineers and CAD designers are more than happy to assist you with acoustics, fire protection or other requirements. Highly skilled project managers and fitting teams ensure that your interior fit-out runs smoothly – so that nothing is left to chance.



**We don't make any concessions when it comes to fire protection:** frameless G30 transom windows at the Max Planck Institute in Mainz.





## We can do it all for you.

### Lindner Concepts:

- Insulation Engineering
- Clean Rooms and Laboratories
- Airports and Airlines
- Railways and Tunnels
- Studios and Concert Halls
- Interior Fit-out and Furnishings
- Cruise Liner and Ship Fit-out
- Hotels and Resorts
- General Contracting

### Lindner Products:

- Facades
- Steel & Glass
- Roofing Systems
- Ceiling Systems
- Lights and Lighting Systems
- Partition Systems
- Doors
- Floor Systems
- Heating and Cooling Technologies
- Dry Lining Systems

### Lindner Service:

- Green Building
- Deconstruction and Gutting
- Clearance of Harmful Substances
- Industrial Scaffolding
- Research and Development
- Delivery
- General Planning
- Installation
- Maintenance and Industrial Service
- Public-Private Partnership (PPP)

### Lindner Group

Bahnhofstrasse 29  
 94424 Arnstorf  
 Germany  
 Phone +49 (0)8723/20-0  
 Fax +49 (0)8723/20-21 47  
[info@Lindner-Group.com](mailto:info@Lindner-Group.com)  
[www.Lindner-Group.com](http://www.Lindner-Group.com)